

Construction

The GEMÜ 655 manually operated 2/2 way full bore diaphragm valve has a metal bonnet and a non-rising handwheel.

Features

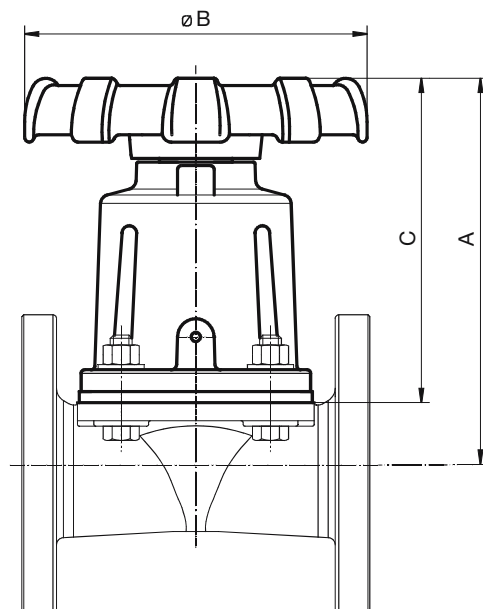
- Optional rubber lining suitable for applications involving particulate media, e.g.:
 - Mining
 - Paper and woodpulp industry
 - Water treatment
 - Ceramics industry
 - Chemical and dyestuff industry
- Valve body and diaphragm available in various materials and designs

Advantages

- High mechanical stability
- High flow rate due to straight through flow
- Optional flow direction, will seal in either flow direction up to full working pressure
- Optional mounting position
- Valve can be cleaned without disassembly of bonnet
- Can be retrofitted with a pneumatic actuator (GEMÜ 9656)

Bonnet dimensions [mm]

DN	NPS	ø B	A	C
15-20	1/2" - 3/4"	87	109	93
25-40	1" - 1 1/2"	118	148	130
50-65	2" - 2 1/2"	188	206	178
80-100	3" - 4"	238	269	229
125-150	5" - 6"	316	407	307
200	8"	416	415	359
250	10"	416	538	484
300	12"	700	687	562



Technical data

Working medium

Corrosive, inert, gaseous and liquid media which have no negative impact on the physical and chemical properties of the body and diaphragm material.

Max. perm. temperature of working medium 100° C

Max. ambient temperature 60° C

Order data

Nominal size	NPS	Working pressure	K _v value	Weight
[mm]		[bar]	[m³/h]	[kg]
15	1/2"	0 - 7	8.2	2
20	3/4"	0 - 7	8.8	3
25	1"	0 - 7	35	4
40	1 1/2"	0 - 7	38	5
50	2"	0 - 7	108	15
65	2 1/2"	0 - 7	114	16
80	3"	0 - 7	284	25
100	4"	0 - 7	298	36
125	5"	0 - 5.5	650	73
150	6"	0 - 5.5	680	76
200	8"	0 - 3.5	1420	127
250	10"	0 - 3.5	2360	214
300	12"	0 - 3	3280	408

All pressures are given as gauge pressures, when applied upstream only.

Connection	Code
Flanges EN 1092 - PN10 - form A (ex DIN 2501 / PN10 / form A) length EN 558-1, series 7 ISO 5752, basic series 7 (ex BS 5156)	52
Flanges EN 1092 - PN10/16 - form A (ex DIN 2501 / PN16 / form A) length EN 558-1, series 7 ISO 5752, basic series 7 (ex BS 5156)	53
Flanges ANSI class 125/150 FF length EN 558-2, series 7 ISO 5752, basic series 7 (ex BS 5156)	58

For overview of available valve bodies for GEMÜ 655 see page 3

Valve body material	Code
EN-GJL-250 GG 25 (cast iron)	8
EN-GJL-250 GG 25 (cast iron) hard rubber lined	13
EN-GJL-250 GG 25 (cast iron) soft rubber lined	52

Body configuration	Code
2/2 way	D

Diaphragm material	Code
CSM Hypalon	1
NBR Perbunan	2
IIR Butyl	6
CR Neoprene	8
NR Natural rubber	15
EPDM Ethylene Propylene Diene Monomer	24

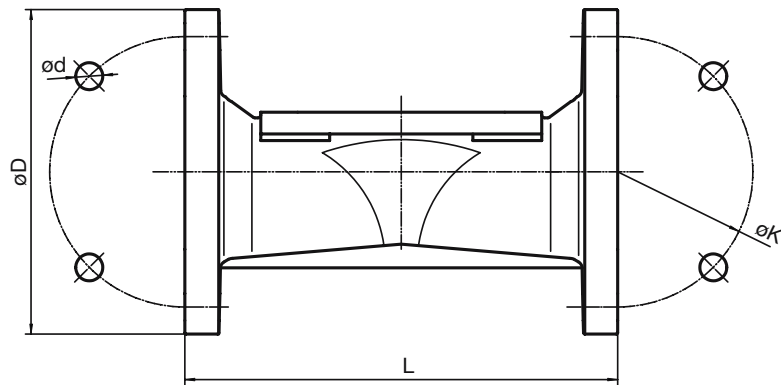
Control function	Code
Manually operated	0

Order example	655	50	D	53	8	24	0
Type	655						
Nominal size		50					
Body configuration (code)			D				
Connection (code)				53			
Valve body material (code)					8		
Diaphragm material (code)						24	
Control function (code)							0

Other connections, valve body materials, linings and diaphragm materials upon request.

Body dimensions connection code 52, 53, 58 [mm]

		Connection code 52, 53						Connection code 58				
		Number of bolt holes	L		$\varnothing D$	$\varnothing K$	$\varnothing d$	L		$\varnothing D$	$\varnothing K$	$\varnothing d$
DN	NPS		Body material code					Body material code				
			Code 8	Code 13, 52				Code 8	Code 13, 52			
15	1/2"	4	102	117	95	65	14	102	117	88.9	60.5	16
20	3/4"	4	117	117	105	75	14	117	117	98.4	69.9	16
25	1"	4	127	127	115	85	14	127	127	108.0	79.2	16
40	1 1/2"	4	159	159	150	110	18	159	159	127.0	98.6	16
50	2"	4	191	191	165	125	18	191	191	152.4	120.7	19
65	2 1/2"	4	216	216	185	145	18	216	216	177.8	139.7	19
80	3"	8	254	254	200	160	18	254	254	190.5	152.4	19
100	4"	8	305	305	220	180	18	305	305	228.6	190.5	19
125	5"	8	356	366	250	210	18	356	366	254.0	215.9	22
150	6"	8	406	416	285	240	22	406	416	279.0	241.3	22
200	8"	8	521	531	340	295	22	521	531	342.9	298.5	22
250	10"	12	635	647	395	350	22	635	647	406.4	362.0	25.4
300	12"	12	749	761	445	400	22	749	761	482.6	431.8	25.4



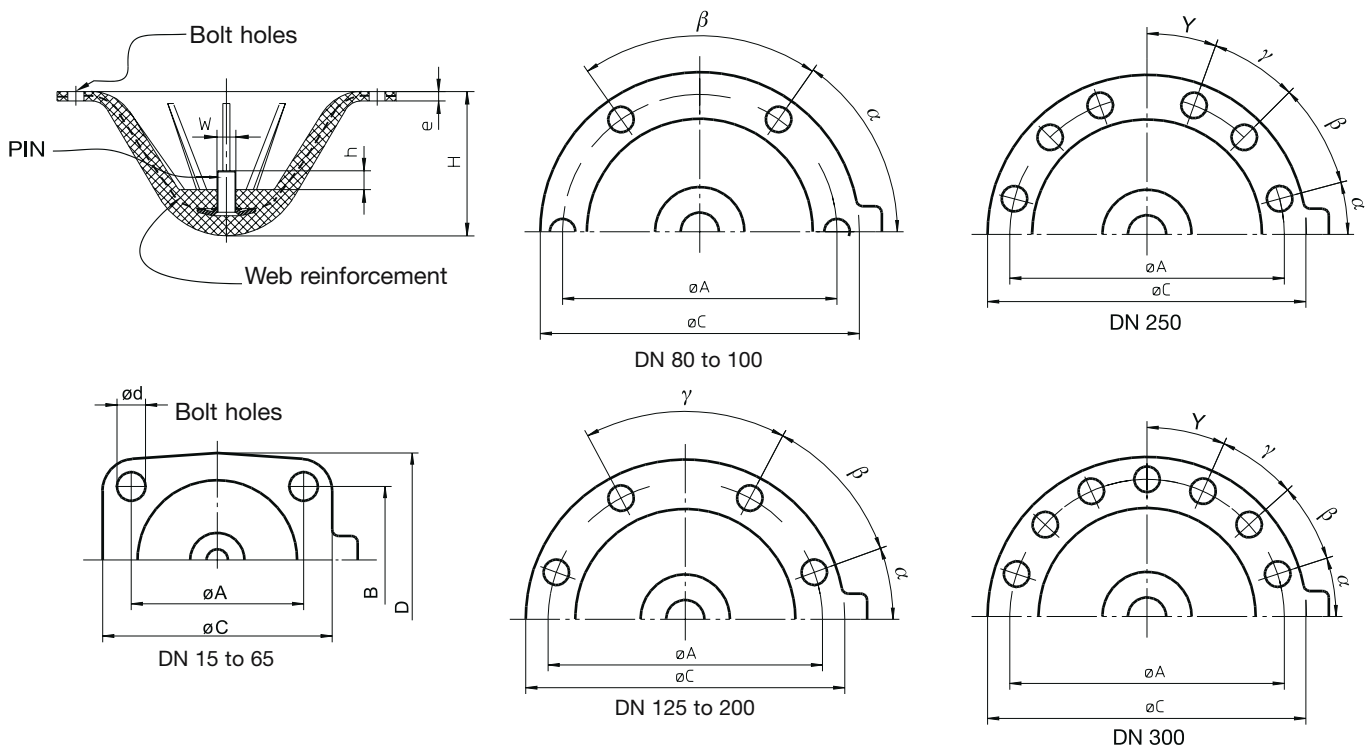
Overview of valve bodies for GEMÜ 655

Connection code	52		53		58		
Material code	8	13	8	13	8	13	52
DN							
15	-	-	X	X	X	X	-
20	-	-	X	X	X	X	-
25	-	-	X	X	X	X	X
40	-	-	X	X	X	X	X
50	-	-	X	X	X	X	X
65	-	-	X	X	X	X	X
80	-	-	X	X	X	X	X
100	-	-	X	X	X	X	X
125	-	-	X	X	X	X	X
150	-	-	X	X	X	X	X
200	X	X	-	-	X	X	X
250	X	X	-	-	X	X	X
300	X	X	-	-	X	X	X

Diaphragm dimensions

	$\varnothing A$	B	$\varnothing C$	D	d	e	h	W	H	α	β	γ	Y	Number of bolt holes	
DN	NPS														
15	1/2"	54	30	69	54	7	3,5	6	3/16"	22	-	-	-	4	
20	3/4"	54	30	69	54	7	3,5	6	3/16"	22	-	-	-	4	
25	1"	64	51	90	70	9	5	8	1/4"	36	-	-	-	4	
40	1 1/2"	64	51	90	70	9	5	8	1/4"	36	-	-	-	4	
50	2"	101	82	159	128	13,5	6	10	5/16"	64	-	-	-	4	
65	2 1/2"	101	82	159	128	13,5	6	10	5/16"	64	-	-	-	4	
80	3"	175	-	223	-	13,5	6	12	5/16"	80	56°	34°	-	6	
100	4"	175	-	223	-	13,5	6	12	5/16"	80	56°	34°	-	6	
125	5"	255	-	287	-	13,5	8	16	5/8"	115	20°	40°	60°	8	
150	6"	255	-	287	-	13,5	8	16	5/8"	115	20°	40°	60°	8	
200	8"	305	-	341	-	18,5	8	20	5/8"	145	30°	40°	40°	8	
250	10"	381	-	410	-	17	10	20	5/8"	178	15°	30°	25°	20°	12
300	12"	528	-	576	-	22	12	25	1"	280	18°	24°	24°	24°	14

The thread of the diaphragm pin corresponds to Whitworth standard.



For further metal diaphragm valves, accessories and other products,
please see our Product Range catalogue and Price List.
Contact GEMÜ.



GEMÜ® VALVES, ACTUATORS
AND CONTROL SYSTEMS