

Diaphragm Valve, Metal

Construction

The GEMÜ 675 manually operated 2/2 way metal diaphragm valve has a non-rising handwheel and an integral optical position indicator as standard.

Features

- Suitable for inert and corrosive* liquid and gaseous media
- Insensitive to particulate media
- Valve body and diaphragm available in various materials and designs
- Various connections available
- Compact design (when space is at a premium)

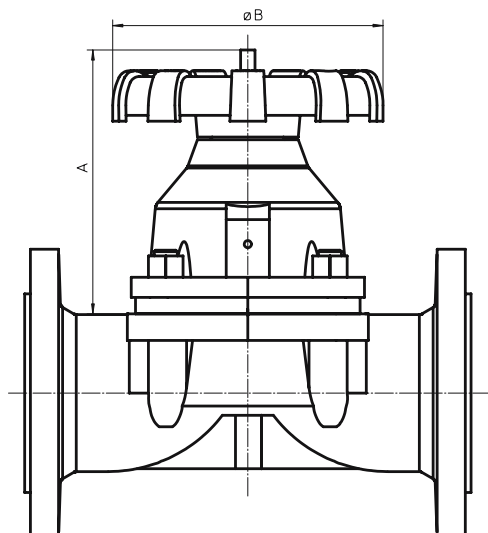
Advantages

- Optional flow direction, will seal in either flow direction up to full working pressure
- Optional mounting position
- Due to its modular design stocks of valve spares are minimized

* see information on working medium on page 2

Bonnet dimensions - GEMÜ 675 [mm]

Diaphragm size	DN	ø B	A
25	15 - 25	90	87
40	32 + 40	118	109
50	50	128	127
65	65	188	171
80	80	188	196
100	100	238	227
125	125	316	300
150	150	316	325
200	200	408	471
250	250	585	646
300	300	700	746



Technical data

Working medium

Corrosive, inert, gaseous and liquid media which have no negative impact on the physical and chemical properties of the body and diaphragm material

Max. perm. temperature of working medium 150° C (depending on diaphragm and body material)

Ambient conditions

Max. permissible ambient temperature 60° C

Diaphragm size	DN	Working pressure		K _v value
		EPDM [bar]	PTFE [bar]	[m ³ /h]
25	15			7
25	20			14
25	25			20
40	32			36
40	40	10	6	40
50	50	10	6	80
65	65	10	6	100
80	80	10	6	160
100	100	10	6	238
125	125	10	6	376
150	150	8	5	496
200	200	5	3	910
250	250	4	2.5	1445
300	300	4	2.5	2550

K_v values are for unlined bodies with elastomer diaphragm.

Order data

Body configuration

2/2 way **D**

Connection

Connection	Code
Threaded connections	
Threaded sockets DIN ISO 228	1
Flanges EN 1092 - PN10/16 - form B, (ex DIN 2501 / PN16 / form C) length EN 558-1, series 1 ISO 5752, basic series 1 (ex DIN 3202-1, series F1)	8
Flanges ANSI class 125/150 RF length MSS SP-88	38
Flanges ANSI class 125/150 RF length EN 558-2, series 1 ISO 5752, basic series 1 (ex DIN 3202-1, series F1)	39
Flanges EN 1092 - PN10 - form A (ex DIN 2501 / PN10 / form A) length EN 558-1, series 7 ISO 5752, basic series 7 (ex BS 5156)	52
Flanges EN 1092 - PN10/16 - form A (ex DIN 2501 / PN16 / form A) length EN 558-1, series 7 ISO 5752, basic series 7 (ex BS 5156)	53
Flanges ANSI class 125/150 FF length EN 558-2, series 7 ISO 5752, basic series 7 (ex BS 5156)	58

Flange ratings refer to flange class only. For valve working pressures see Technical data.

Valve body material

Valve body material	Code
EN-GJL-250 GG 25 (cast iron)	8
EN-GJL-250 GG 25 (cast iron) hard rubber lined	13

Valve body material

Valve body material	Code
EN-GJS-400-18-LT GGG 40.3 (S.G.iron) PFA lined	17
EN-GJS-400-18-LT GGG 40.3 (S.G.iron) PP lined	18
EN-GJL-250 GG 25 (cast iron) PTFE lined	19
EN-GJL-250 GG 25 (cast iron) Glass lined	50
EN-GJL-250 GG 25 (cast iron) Halar coated	55
EN-GJS-400-18-LT GGG 40.3 (S.G.iron) Hard rubber lined	83

Diaphragm material

Diaphragm material	Code
CSM Hypalon	1
NBR Perbunan	2
FPM Fluorocaoutchouc	4
CR Neoprene	8
EPDM KTW approval**	14
PTFE/EPDM fully laminated	52
PTFE/EPDM fully laminated	5*
PTFE/EPDM convex PTFE loose	5E

* only in conjunction with valve body material code 50

** KTW approval for DN 15 - 150

Control function

Control function	Code
Manually operated	0
Manually operated with lockable handwheel	L

Order example

675 50 D 8 8 14 0

Type	675						
Nominal size		50					
Body configuration (Code)			D				
Connection (Code)				8			
Valve body material (Code)					8		
Diaphragm material (Code)						14	
Control function (Code)							0

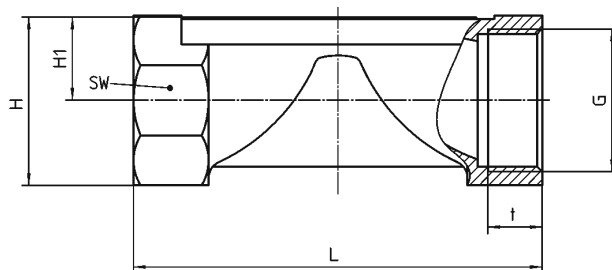
Further connections, valve body materials, linings and diaphragm materials upon request

Body dimensions

Threaded sockets - DIN ISO 228, connection code 1 [mm]

Valve body material GG 25 (Code 8)

Diaphragm size	DN	G	H	H 1	t	L	SW
25	15	G 1/2	35	19	12	85	32
25	20	G 3/4	40	19	13	85	41
25	25	G 1	42	19	16	110	46
40	32	G 1 1/4	56	28	16	120	55
40	40	G 1 1/2	61	28	18	140	65
50	50	G 2	73	35	18	165	75

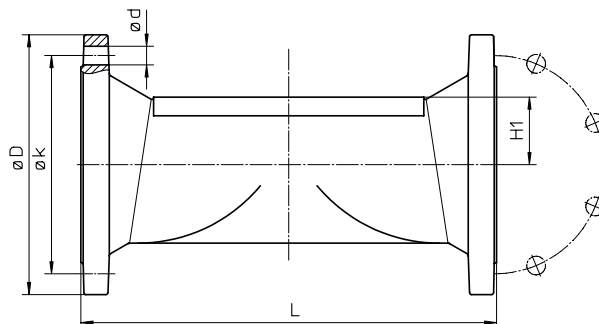


Flanges - DIN EN 1092-2, connection code 8, 52, 53 [mm]

Valve body material GG 25 (Code 8, 13, 19, 55), GGG 40.3 (Code 17, 18, 83)

						H1				EN 558-1 series 1	EN 558-1 series 7 (ex BS 5156)
						Connection code 8			Connection code 52, 53	Connection code 8	Connection code 52, 53
MG*	DN	øD	øk	ød	Number of bolt holes	Material code 8, 55	Material code 13, 19	Material code 17, 18, 83	Material code 8	L Material code 8, 13, 17, 18, 19, 55, 83	L Material code 8
25	15	95	65	14	4	19.0	-	18.0	19.0	130	117
25	20	105	75	14	4	19.0	17.0	20.5	19.0	150	117
25	25	115	85	14	4	19.0	16.0	23.0	19.0	160	127
40	32	140	100	18	4	28.0	21.0	28.7	28.0	180	146
40	40	150	110	18	4	28.0	21.0	33.0	28.0	200	159
50	50	165	125	18	4	35.0	25.0	39.0	35.0	230	191
65	65	175	145	18	4	27.5	30.5	51.0	27.5	290	216
80	80	200	160	18	8	33.0	34.0	59.5	33.0	310	254
100	100	220	180	18	8	43.0	50.0	73.0	43.0	350	305
125	125	250	210	18	8	65.0	69.0	-	65.0	400	356
150	150	285	240	23	8	58.0	62.0	-	58.0	480	406
200	200	340	295	23	8	-	-	-	88.0	-	521
250	250	400	350	23	12	-	-	-	120.5	-	635
300	300	455	400	23	12	-	-	-	142.5	-	749

* MG = Diaphragm size

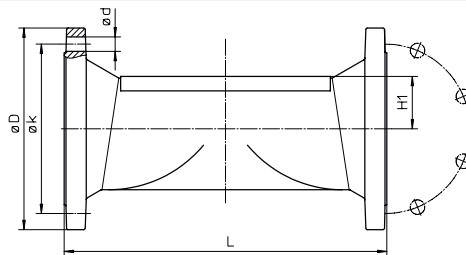


Flanges- ANSI B 16.5, connection code 38, 39, 58 [mm]

Valve body material GG 25 (Code 8, 13, 50), GGG 40.3 (Code 17, 18, 83)

						H1				MSS Sp-88 Connection code 38		EN 558-2 series 1 Connection code 39		EN 558-2 series 7 (ex BS 5156) Connect. code 58	
						Connection code* 38, 39, 58									
MG*	DN	øD	øk	ød	No. of bolt holes	Material code 8	Material code 13	Material code 17, 18, 83	Material code 50	L Material code 17, 18, 83		L Material code 8, 13, 17, 18, 83		L Material code 8, 50	
25	15	88.9	60.5	15.7	4	19.0	-	18.0	21.0	-	-	130	117	120	
25	20	98.6	69.9	15.7	4	19.0	17.0	20.5	21.0	146	146.4	150	117	120	
25	25	108.0	79.2	15.7	4	19.0	16.0	23.0	21.0	146	146.4	160	127	130	
40	32	117.3	88.9	15.7	4	28.0	21.0	28.7	30.0	-	-	180	146	149	
40	40	127.0	98.6	15.7	4	28.0	21.0	33.0	30.0	175	171.4	200	159	162	
50	50	152.4	120.7	19.1	4	35.0	25.0	39.0	37.0	200	197.4	230	191	194	
65	65	177.8	139.7	19.1	4	27.5	30.5	51.0	29.5	226	222.4	290	216	219	
80	80	190.5	152.4	19.1	4	33.0	34.0	59.5	35.0	260	260.4	310	254	257	
100	100	228.6	190.5	19.1	8	43.0	50.0	73.0	45.0	327	324.4	350	305	308	
125	125	254.0	215.9	22.4	8	65.0	69.0	-	65.0	-	-	400	356	359	
150	150	279.4	241.3	22.4	8	58.0	62.0	-	60.0	-	-	480	406	409	
200	200	342.9	298.5	22.4	8	-	87.0	-	90.0	-	-	-	521	524	
250	250	406.4	362.0	22.4	12	-	118.0	-	122.5	-	-	-	635	638	
300	300	482.6	431.8	22.4	12	-	150.0	-	144.5	-	-	-	749	752	

* For availability see overview of valve bodies MG = Diaphragm size



Overview of valve bodies for GEMÜ 675

Connection code	1	8								38			39					52	53	58	
Material code	8	8	13	17	18	19	55	83	17	18	83	8	13	17	18	83	8	8	8	50	
MG**	DN																				
25	15	X	X	-	X*	X*	-	X	X	-	-	-	X	-	X*	X*	X	-	X	X	X
25	20	X	X	X	X*	X*	-	X	X	X	X	X	X	X	X*	X*	X	-	X	X	X
25	25	X	X	X	X*	X*	-	X	X	X	X	X	X	X	X*	X*	X	-	X	X	X
40	32	X	X	X	X*	X*	-	X	X	-	-	-	X	X	X*	X*	X	-	-	X	X
40	40	X	X	X	X*	X*	-	X	X	X	X	X	X	X	X*	X*	X	-	X	X	X
50	50	X	X	X	X*	X*	-	X	X	X	X	X	X	X	X*	X*	X	-	X	X	X
65	65	-	X	X	X	X	-	X	X	X	X	X	X	X	X	X	X	-	X	X	X
80	80	-	X*	X	X*	X*	-	X	X	X	X	X	X	X	X*	X*	X	-	X	X	X
100	100	-	X	X	X	X	-	X	X	X	X	X	X	X	X	X	X	-	X	X	X
125	125	-	X	-	-	-	X	X	-	-	-	-	X	-	-	-	-	-	X	X	X
150	150	-	X	-	-	-	X	X	-	-	-	-	X	-	-	-	-	-	X	X	X
200	200	-	-	-	-	-	-	-	-	-	-	-	-	-	-	-	X	-	X	X	X
250	250	-	-	-	-	-	-	-	-	-	-	-	-	-	-	-	X	-	X	X	X
300	300	-	-	-	-	-	-	-	-	-	-	-	-	-	-	-	X	-	X	X	X

* Valve bodies are suitable for use with diaphragm code 5E.

** MG = Diaphragm size

For further metal diaphragm valves, accessories and other products, please see our Product Range catalogue and Price List. Contact GEMÜ.

GEMÜ® VALVES, ACTUATORS AND CONTROL SYSTEMS

