

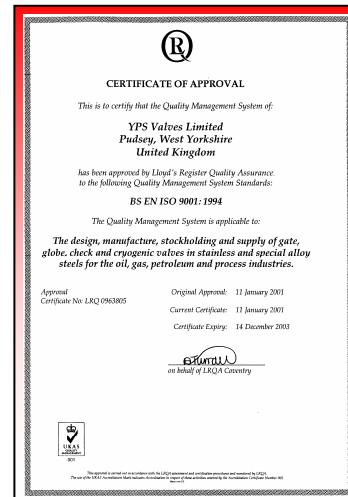
SERVING THE WORLD'S OIL, CHEMICAL AND PETROCHEMICAL INDUSTRY

YPS VALVES LTD is one of the largest companies in Europe dedicated to the manufacture and stocking of Stainless Steel and High Alloy Steel Cast and Forged Gate, Globe and Check Valves. Since forming in 1972 YPS VALVES LTD has established an enviable reputation for quality and reliability throughout the product range, combining expertise with experience.



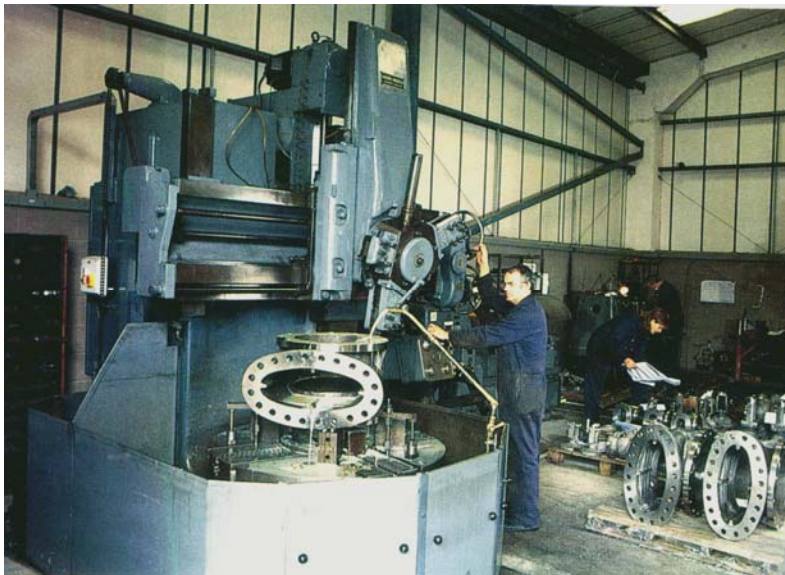
During the early years close links were formed with Langley Alloys, one of the leading foundries in the development of super alloys and the forerunner on the commercial production of duplex alloys. To enable Langley Alloys to concentrate on the production of metals an agreement was reached whereby YPS gained the production rights of Langley Stainless Steel Valves.

In accordance with ASME, API, MSS and BS Specifications, YPS continues to produce and develop the Langley range of valves under its ISO 9001 Registration.



LANGLEY VALVES

At YPS Valves we pride ourselves on being able to meet the most stringent valve specifications. Whether you the client require special testing to castings and/or the valve, or a special design feature, our technical design team combined with extensive in-house facilities can meet your requirements to the highest standards of quality and workmanship.



Testing

- Hydrostatic
- Helium/Gas
- Emission
- Hardness (NACE)
- Clean Room
- Dye Penetrant
- Positive Material Identification

Special Modifications

- Cryogenic
- Soft Seating
- Jacketing
- Stellite
- Actuation
- Bellows Sealed
- Trim Changes
- 'Y' Pattern Globe & Strainers



PRODUCT RANGE

1. Langley Brand Production : Gate, Globe, Swing/Piston Check.
: 150 to 2500 Class.
Design to BS1414, BS1873, BS1868, ISO 15761
API 600, ASME B16.34, BS6364
2. Austenitic Stainless Steel : CF8M, CF3M, CF8, CF3, CF8C, CF10,
CG8M, CG3M
3. High Alloy Steel : Hastelloy® 'C' and 'B', Pure Nickel, Inconel®,
Incoloy®, Zirconium, Monel®, CN7M/Alloy 20.
Other materials available upon request.
4. Duplex Stainless Steel : Ferralium® 255 or SD40.
A890 Grades 4A, 5A and 6A.
5. Connection : Flanged ANSI, BS4504 and BS10,
Butt Weld (various pipe schedules),
Screwed NPT & BSP, Socket Weld.
6. Special Designs : Flush Outlet, 'Y' Type Globe, 'Y' Strainer,
Right Angle Type Globe Valves.

For our complete size range in API 600 and ASME B16.34 please refer to the following page.

Please contact our Technical Department for optional trim materials and/or features you may require which are not listed in this catalogue. If you require more detailed information on suitability for intended service duty, please enquire.

LANGLEY HIGH ALLOYS

YPS Valves Ltd has gained a reputation for promoting quality Langley designed valves in special high alloy materials for both hazardous and corrosive service conditions.

The Langley foundry successfully patented the Super Duplex grade 'Ferralium®' which gives outstanding resistance to corrosion in seawater and acid media.



Duplex Stainless Steel production is only part of the YPS commitment to meeting the end user's requirements for potentially dangerous operating conditions. Other high alloys frequently passing through our production plant include Alloys 'B' and 'C', Alloy 20, Alloy 400 and Nickel.

Contacts

E-Mail Addresses

Managing Director adrian.ducker@yps-valves.co.uk
 Assistant Managing Director srb@yps-valves.co.uk
 Sales Manager frankie.mccarthy@yps-valves.co.uk
 Sales Office Manager duncan.kirk@yps-valves.co.uk
 Technical Sales john.pinnington@yps-valves.co.uk
 Technical Director steve.chapman@yps-valves.co.uk
 Customer Service/Shipping stephanie.gibson@yps-valves.co.uk
 Quality peter.thompson@yps-valves.co.uk
 Accounts rachel.wormald@yps-valves.co.uk

Main Direct Telephone Numbers

Sales	Simon R Barraclough	0113 201 1909
	Frankie McCarthy	0113 201 1908
	Duncan Kirk	0113 201 1906
Technical Sales	John Pinnington	0113 201 1903
Customer Services	Stephanie Gibson	0113 201 1905
Accounts	Rachel Wormald	0113 201 1901
Technical	Steve Chapman	0113 201 1904
Quality	Peter Thompson	0113 201 1902

Website: www.yps-valves.co.uk

YPS VALVES LTD
 GRANGEFIELD INDUSTRIAL ESTATE, PUDSEY,
 WEST YORKSHIRE, LS28 6QW
 TEL: 0113 2567725 FAX: 0113 2361987

STAINLESS STEEL
and other high alloy
GATE, GLOBE & CHECK VALVES

By

LANGLEY

STANDARD PRODUCTION
OTHER DESIGNS AND SIZES AVAILABLE ON REQUEST

API 600

ANSI 150 Gate – ½” to 36”	-	Globe – ½” to 20”	-	Check – ½” to 30”
ANSI 300 Gate – ½” to 30”	-	Globe – ½” to 12”	-	Check – ½” to 30”
ANSI 600 Gate – ½” to 24”	-	Globe – ½” to 12”	-	Check – ½” to 30”
ANSI 900 Gate – 3” to 10”	-	Globe – 3” to 8”	-	Check – 2” to 18”
ANSI 1500 Gate – ½” to 12”	-	Globe – ½” to 6”	-	Check – ½” to 8”

ANSI B16.34

ANSI 150 Gate – ½” to 24”	-	Globe – ½” to 12”	-	Check – ½” to 24”
ANSI 300 Gate – ½” to 24”	-	Globe – ½” to 12”	-	Check – ½” to 24”
ANSI 600 Gate – 2” to 12”	-	Globe – 2” to 12”	-	Check – 2” to 12”
ANSI 900 Gate – 3” to 8”	-	Globe – 3” to 8”	-	Check – 3” to 8”
ANSI 1500 Gate – 2” to 6”	-	Globe – 2” to 6”	-	Check – 2” to 6”

CF8M – CF3M – CF8 – CF3 – CF8C – CF10 – CG10 – CG3M – CG8M
HASTELLOY® B & C – NICKEL – INCONEL® – INCOLOY® – ZIRCONIUM – TITANIUM
MONEL® – CN7M/ALLOY 20 – DUPLEX – FERRALIUM® & MORE

REQUEST CATALOGUE – CD AVAILABLE

LANGLEY VALVES

STOCKING AND DISTRIBUTION

Manufacturer and Sole U.K. Stockist of:



LANGLEY Gate, Globe and Check Valves

Materials:	ASTM A351 – CF8M, CF8C, CF8, CF3M, CF3, CF10, CG8M, CG3M; Monel and Hastelloy; Alloy 20; Duplex and Super Duplex and any other material types to order.
Size Range:	1/2" – 30" NB.
Pressure Class:	150lb to 1500lb.
End Connections:	Flanged, Butt Weld, Socket Weld and Screwed
International Standards Include:	BS 1414, BS 1873, BS 1868, API 600, BS5352, ANSI B16.34, BS6364

U.K. Distributor and Stockist of:



VELAN Gate, Globe and Check Valves

Materials:	ASTM A351 – CF8M, CF8 and CF8C
Size Range:	1/2" – 36" NB
Pressure Class:	150lb. To 2500lb.
End Connections:	Flanged, Butt Weld
International Standards include:	BS 1414, BS 1873, BS 1868, API 600 API 603, ANSI B16.34.



OMB Gate, Globe, Check and Bellows Sealed Valves

Materials:	ASTM A182 – F304, 304L, 316L, 321, 347 Monel and Hastelloy; Alloy 20 and Duplex Alloy Steels.
Size Range:	1/2" – 2" NB.
Pressure Class:	150lb to 2500lb.
End Connections:	Flanged, Butt Weld, Socket Weld and Screwed
International Standards Include:	ISO 15761, BS 5352, API 602

LANGLEY VALVES

